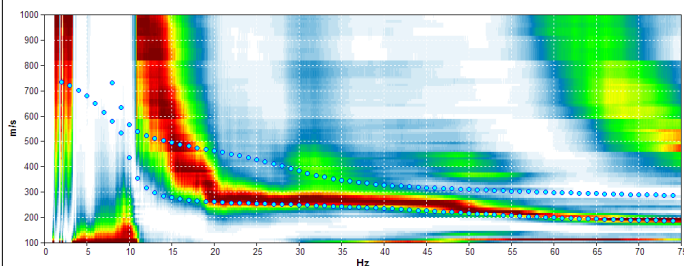
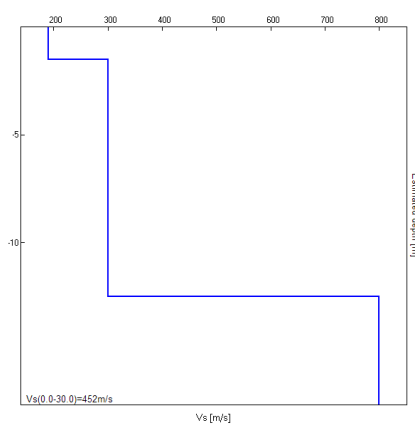


## Misura in array di tipo Re.Mi.

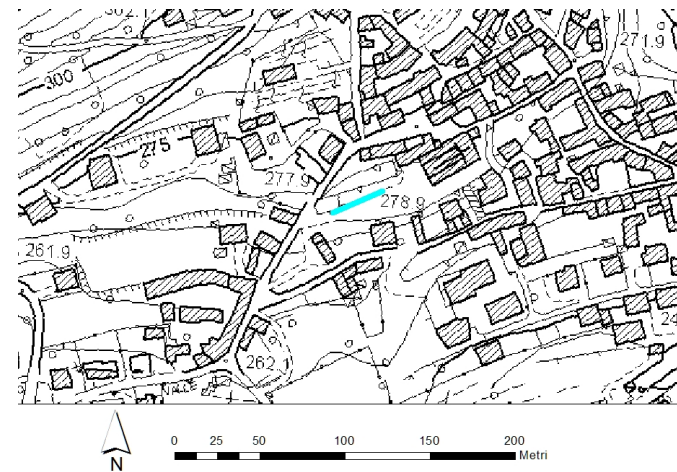
|  |         |
|--|---------|
| Progressivo                                | A26     |
| Latitudine WGS84 - 33N (inizio stesa) [°]  | 5097732 |
| Longitudine WGS84 - 33N (inizio stesa) [°] | 287277  |
| Latitudine WGS84 - 33N (fine stesa) [°]    | 5097720 |
| Longitudine WGS84 - 33N (fine stesa) [°]   | 287247  |
| Quota p.c. s.l.m. [m]                      | 279     |
| Anno di misura                             | 2015    |



Modelled rayleigh wave phase velocity



Profilo Vs



Ubicazione