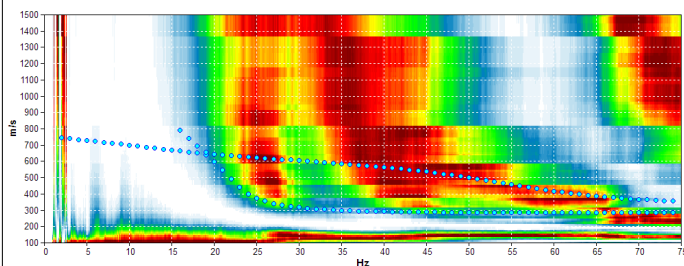
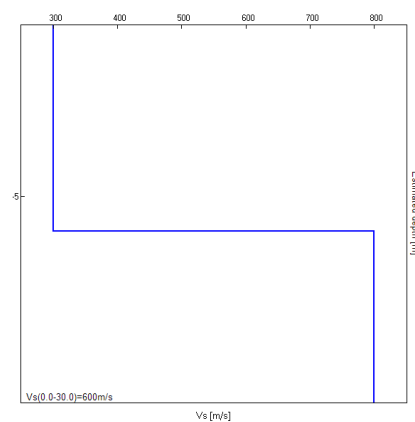


Misura in array di tipo Re.Mi.

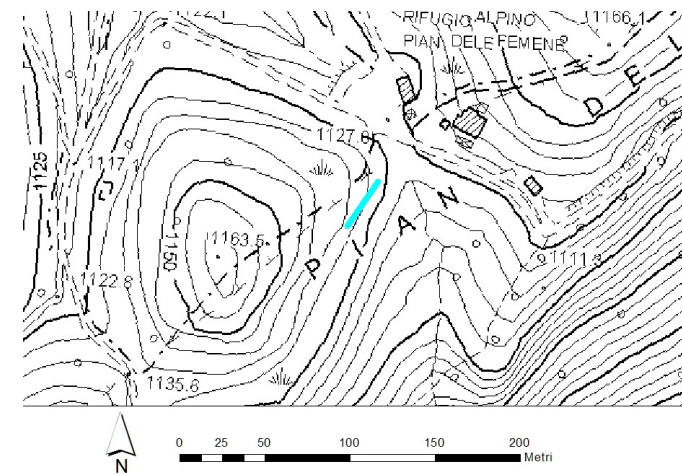
Progressivo	A33
Latitudine WGS84 - 33N (inizio stesa) [°]	5099220
Longitudine WGS84 - 33N (inizio stesa) [°]	285319
Latitudine WGS84 - 33N (fine stesa) [°]	5099247
Longitudine WGS84 - 33N (fine stesa) [°]	285336
Quota p.c. s.l.m. [m]	1120
Anno di misura	2015



Modelled rayleigh wave phase velocity



Profilo Vs



Ubicazione