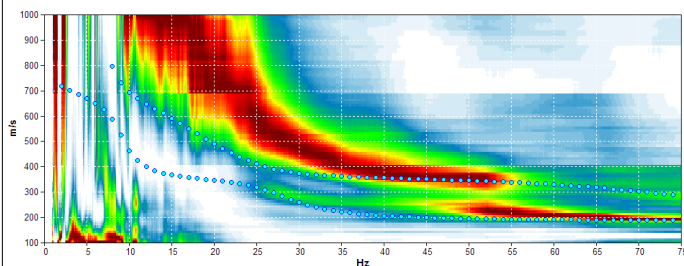
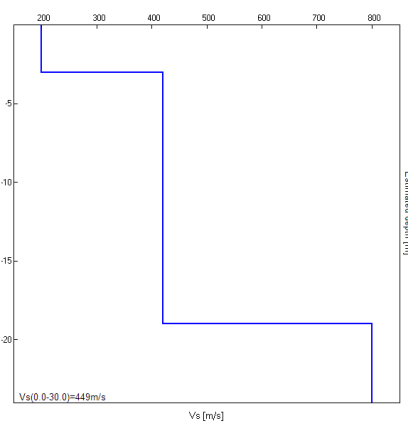


## Misura in array di tipo Re.Mi.

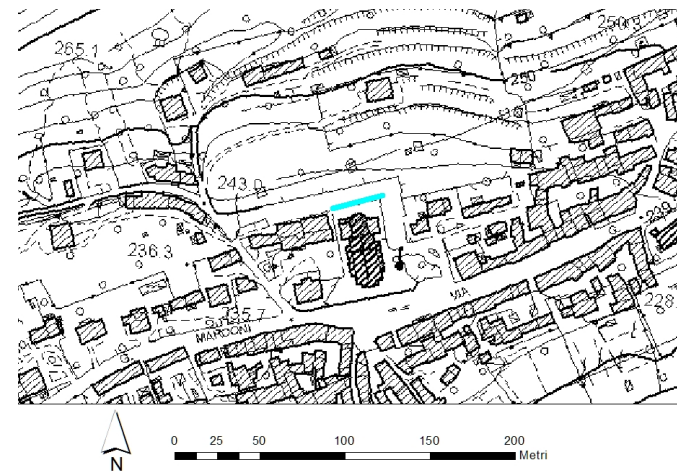
Progressivo	A18
Latitudine WGS84 - 33N (inizio stesa) [°]	5096347
Longitudine WGS84 - 33N (inizio stesa) [°]	284400
Latitudine WGS84 - 33N (fine stesa) [°]	5096355
Longitudine WGS84 - 33N (fine stesa) [°]	284428
Quota p.c. s.l.m. [m]	242
Anno di misura	2015



Modelled rayleigh wave phase velocity



Profilo Vs



Ubicazione