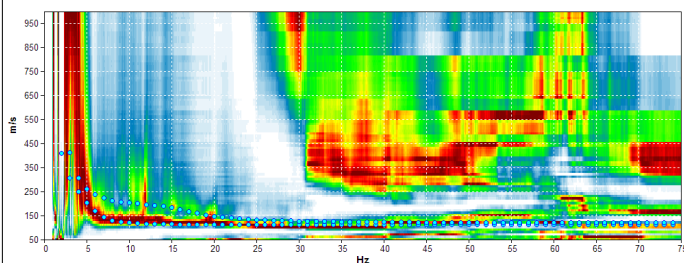
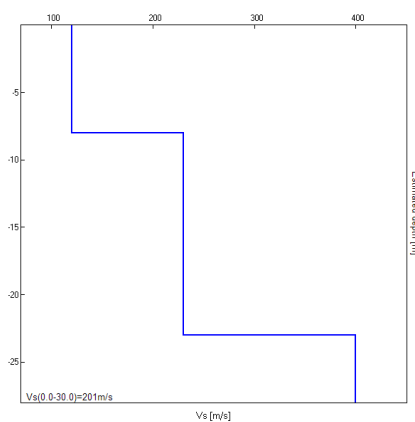


Misura in array di tipo Re.Mi.

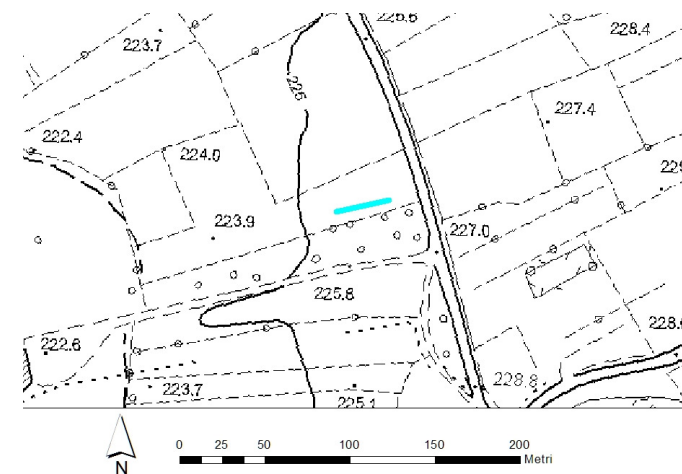
Progressivo	A9
Latitudine WGS84 - 33N (inizio stesa) [°]	5097074
Longitudine WGS84 - 33N (inizio stesa) [°]	286704
Latitudine WGS84 - 33N (fine stesa) [°]	5097081
Longitudine WGS84 - 33N (fine stesa) [°]	286735
Quota p.c. s.l.m. [m]	226
Anno di misura	2015



Modelled rayleigh wave phase velocity



Profilo Vs



Ubicazione