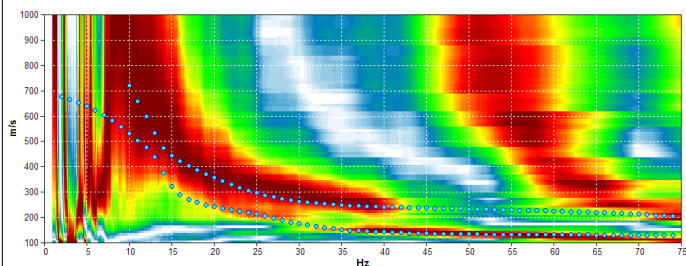
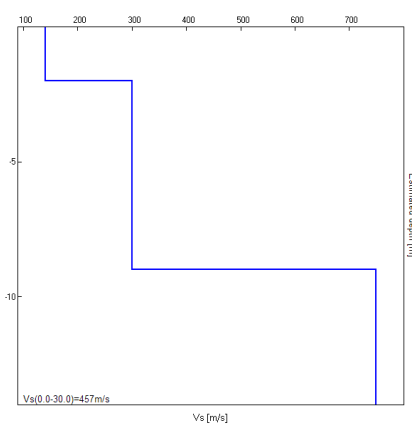


Misura in array di tipo Re.Mi.

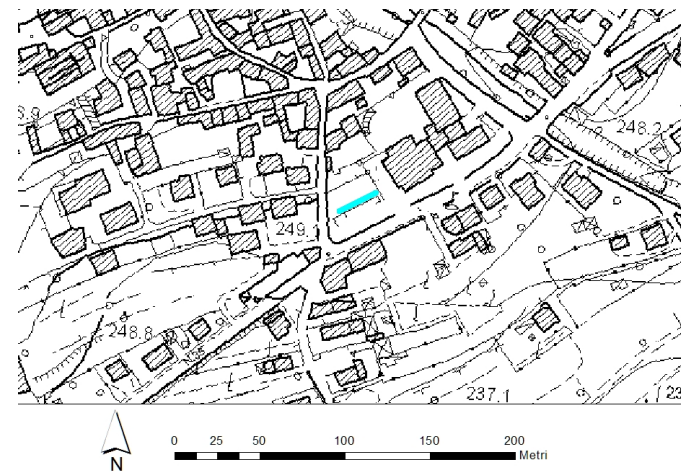
Progressivo	A27
Latitudine WGS84 - 33N (inizio stesa) [°]	5097679
Longitudine WGS84 - 33N (inizio stesa) [°]	287499
Latitudine WGS84 - 33N (fine stesa) [°]	5097668
Longitudine WGS84 - 33N (fine stesa) [°]	287478
Quota p.c. s.l.m. [m]	249
Anno di misura	2015



Modelled rayleigh wave phase velocity



Profilo Vs



Ubicazione