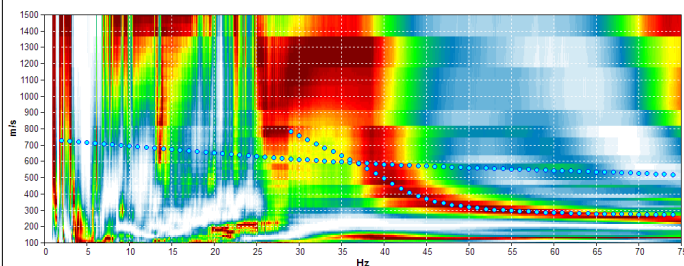
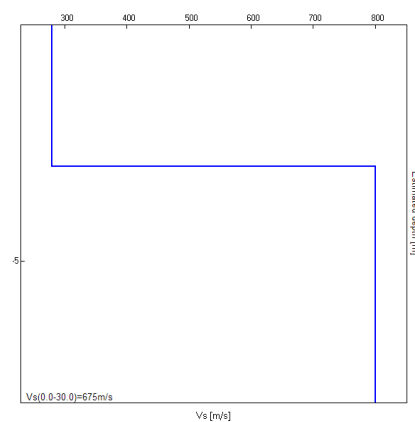


Misura in array di tipo Re.Mi.

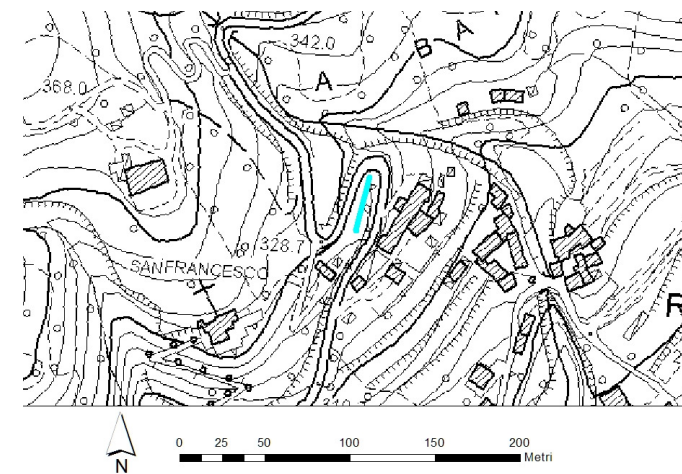
Progressivo	A24
Latitudine WGS84 - 33N (inizio stesa) [°]	5098043
Longitudine WGS84 - 33N (inizio stesa) [°]	287335
Latitudine WGS84 - 33N (fine stesa) [°]	5098012
Longitudine WGS84 - 33N (fine stesa) [°]	287328
Quota p.c. s.l.m. [m]	320
Anno di misura	2015



Modelled rayleigh wave phase velocity



Profilo Vs



Ubicazione