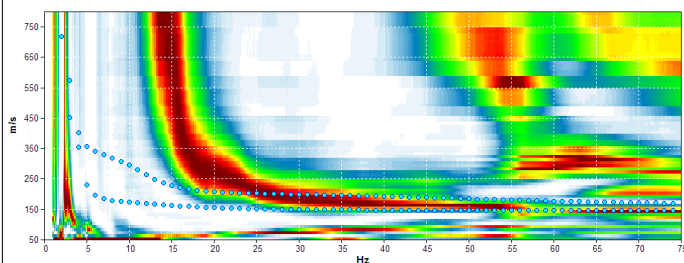
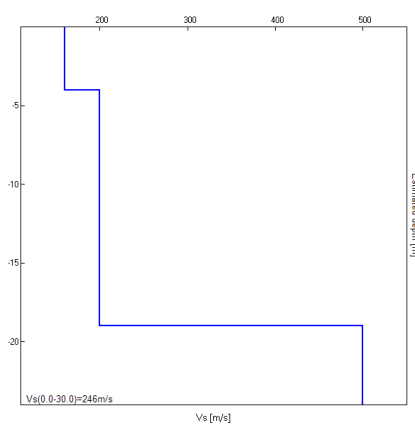


Misura in array di tipo Re.Mi.

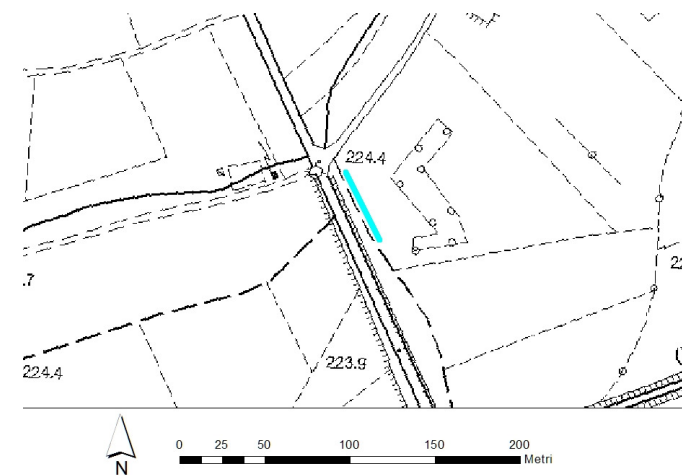
Progressivo	A14
Latitudine WGS84 - 33N (inizio stesa) [°]	5095787
Longitudine WGS84 - 33N (inizio stesa) [°]	284078
Latitudine WGS84 - 33N (fine stesa) [°]	5095747
Longitudine WGS84 - 33N (fine stesa) [°]	284098
Quota p.c. s.l.m. [m]	224
Anno di misura	2015



Modelled rayleigh wave phase velocity



Profilo Vs



Ubicazione