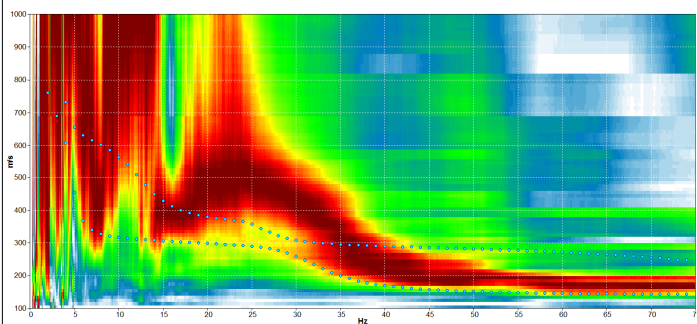
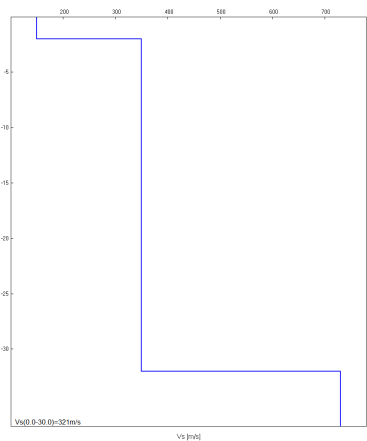


Misura in array di tipo Re.Mi.

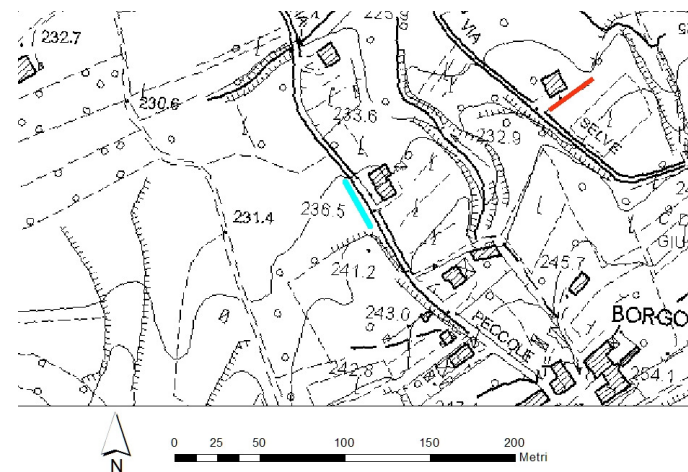
Progressivo	A1
Latitudine WGS84 - 33N (inizio stesa) [°]	5097476
Longitudine WGS84 - 33N (inizio stesa) [°]	287848
Latitudine WGS84 - 33N (fine stesa) [°]	5097450
Longitudine WGS84 - 33N (fine stesa) [°]	287863
Quota p.c. s.l.m. [m]	237
Anno di misura	2015



Modelled rayleigh wave phase velocity



Profilo Vs



Ubicazione