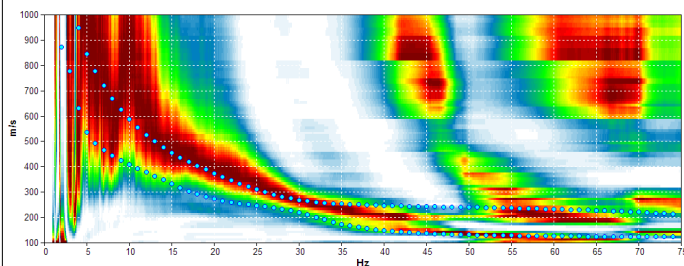
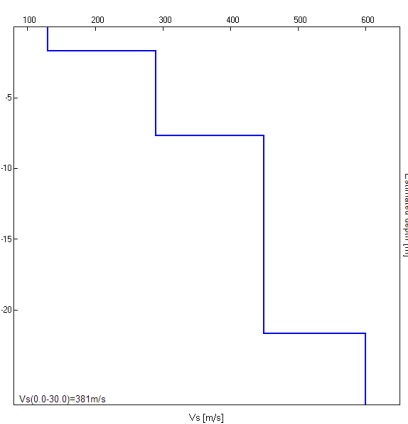


Misura in array di tipo Re.Mi.

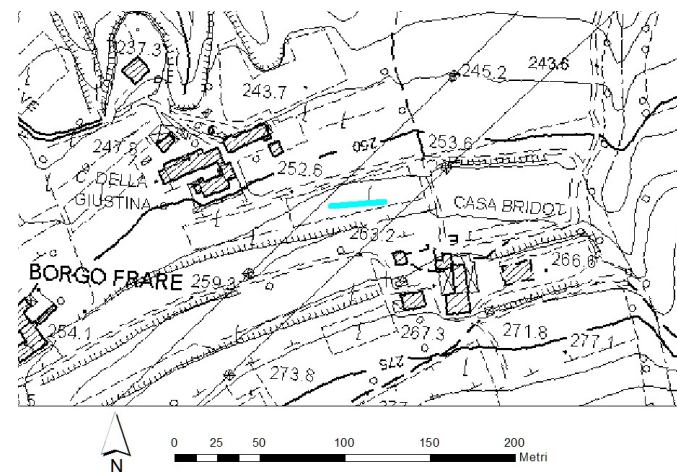
Progressivo	A5
Latitudine WGS84 - 33N (inizio stesa) [°]	5097437
Longitudine WGS84 - 33N (inizio stesa) [°]	288182
Latitudine WGS84 - 33N (fine stesa) [°]	5097439
Longitudine WGS84 - 33N (fine stesa) [°]	288214
Quota p.c. s.l.m. [m]	255
Anno di misura	2015



Modelled rayleigh wave phase velocity



Profilo Vs



Ubicazione