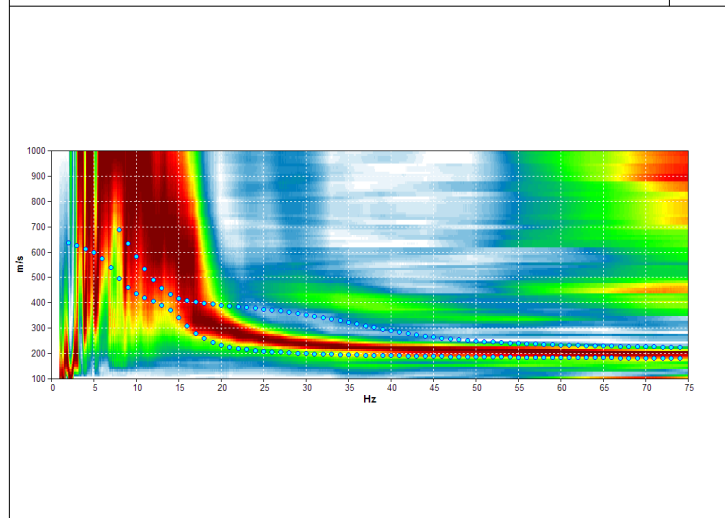
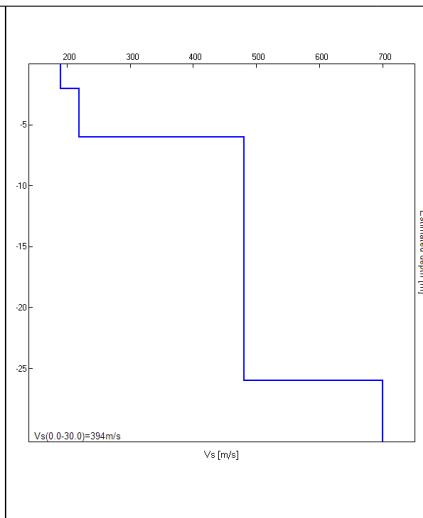


Misura in array di tipo Re.Mi.

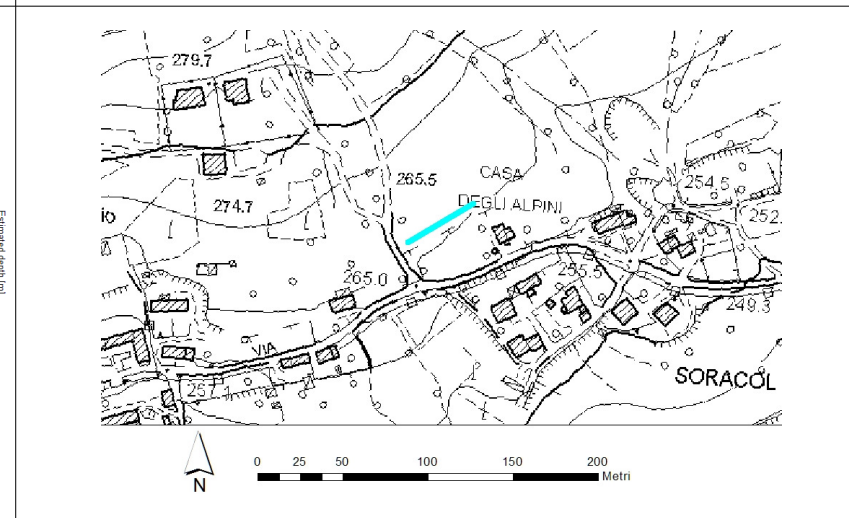
Progressivo	A16
Latitudine WGS84 - 33N (inizio stesa) [°]	5096152
Longitudine WGS84 - 33N (inizio stesa) [°]	283385
Latitudine WGS84 - 33N (fine stesa) [°]	5096175
Longitudine WGS84 - 33N (fine stesa) [°]	283424
Quota p.c. s.l.m. [m]	265
Anno di misura	2015



Modelled rayleigh wave phase velocity



Profilo Vs



Ubicazione