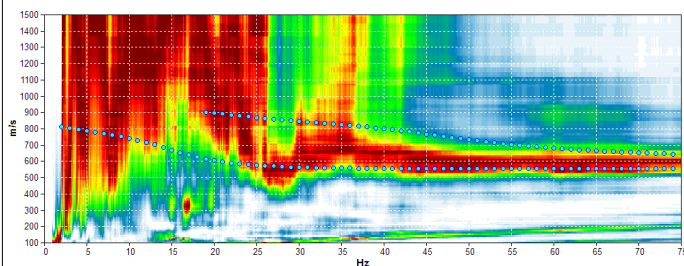
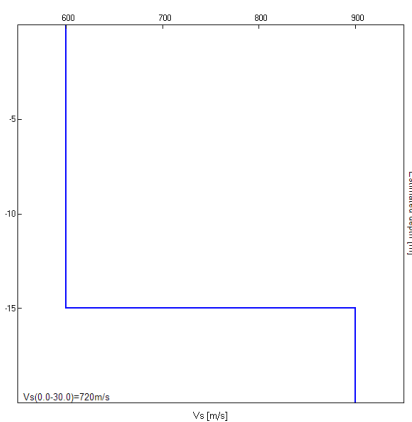


Misura in array di tipo Re.Mi.

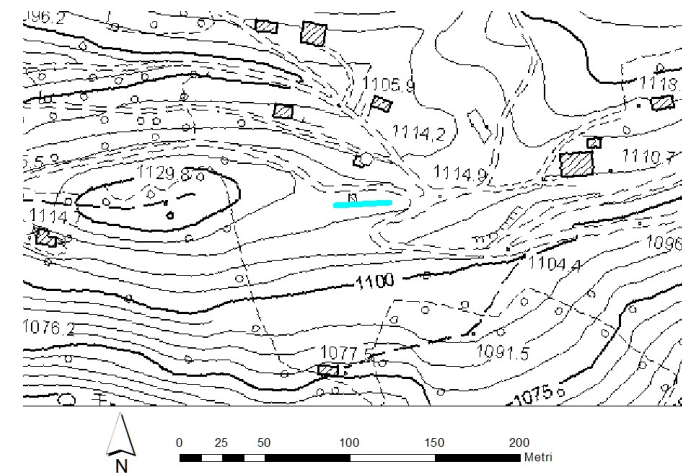
Progressivo	A34
Latitudine WGS84 - 33N (inizio stesa) [°]	5098121
Longitudine WGS84 - 33N (inizio stesa) [°]	283843
Latitudine WGS84 - 33N (fine stesa) [°]	5098122
Longitudine WGS84 - 33N (fine stesa) [°]	283875
Quota p.c. s.l.m. [m]	1115
Anno di misura	2015



Modelled rayleigh wave phase velocity



Profilo Vs



Ubicazione