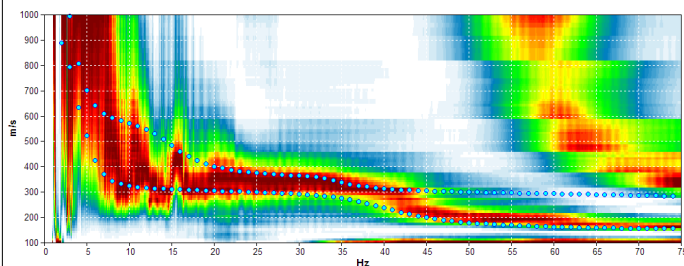
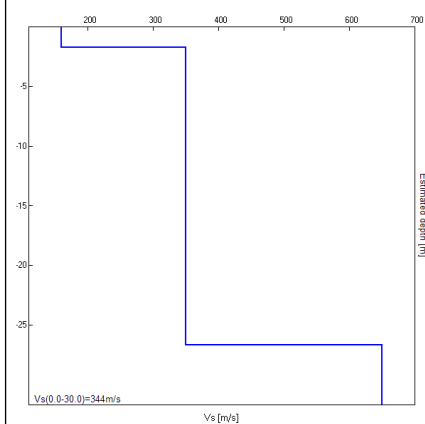


## Misura in array di tipo Re.Mi.

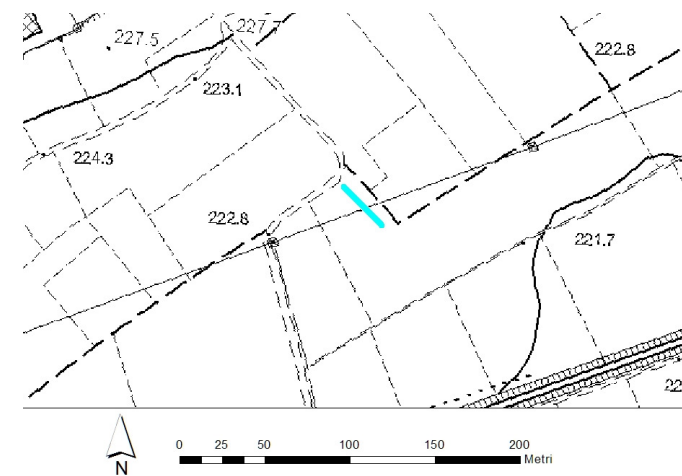
Progressivo	A11
Latitudine WGS84 - 33N (inizio stesa) [°]	5095501
Longitudine WGS84 - 33N (inizio stesa) [°]	283370
Latitudine WGS84 - 33N (fine stesa) [°]	5095478
Longitudine WGS84 - 33N (fine stesa) [°]	283392
Quota p.c. s.l.m. [m]	226
Anno di misura	2015



Modelled rayleigh wave phase velocity



Profilo Vs



Ubicazione