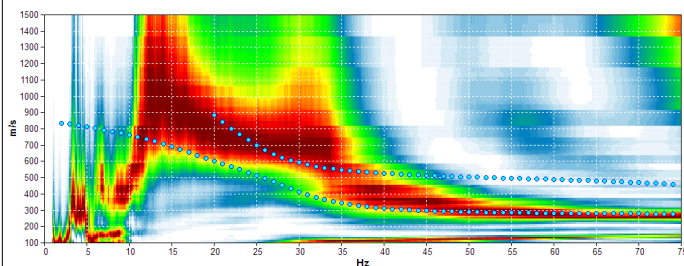
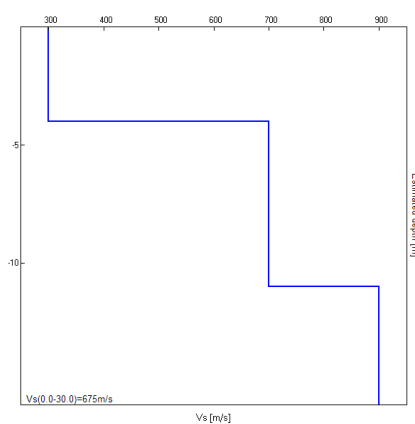


Misura in array di tipo Re.Mi.

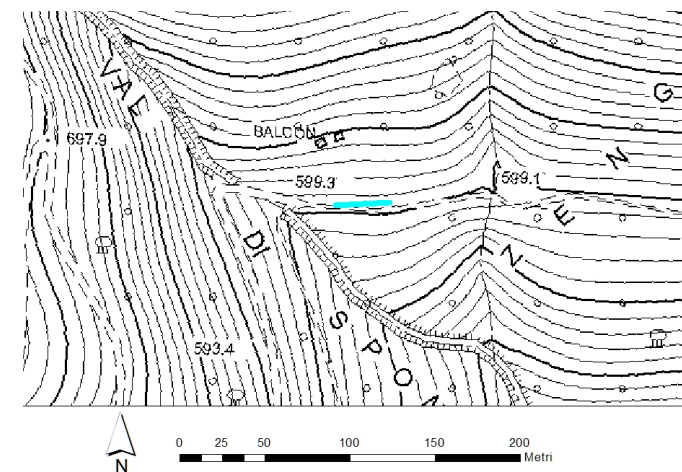
Progressivo	A35
Latitudine WGS84 - 33N (inizio stesa) [°]	5097128
Longitudine WGS84 - 33N (inizio stesa) [°]	282734
Latitudine WGS84 - 33N (fine stesa) [°]	5097130
Longitudine WGS84 - 33N (fine stesa) [°]	282766
Quota p.c. s.l.m. [m]	605
Anno di misura	2015



Modelled rayleigh wave phase velocity



Profilo Vs



Ubicazione