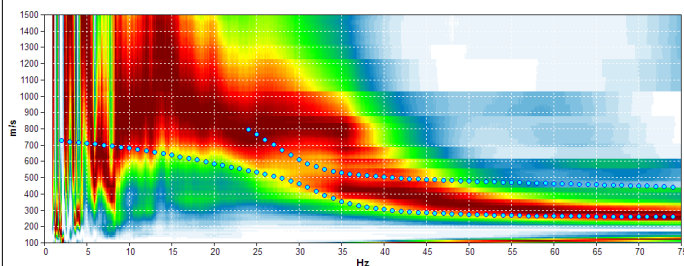
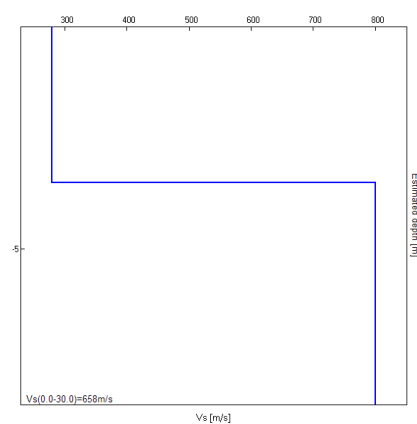


Misura in array di tipo Re.Mi.

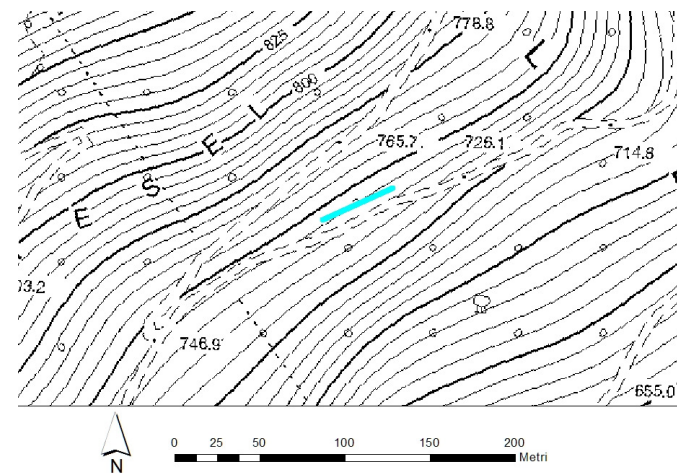
Progressivo	A17
Latitudine WGS84 - 33N (inizio stesa) [°]	5096964
Longitudine WGS84 - 33N (inizio stesa) [°]	282343
Latitudine WGS84 - 33N (fine stesa) [°]	5096983
Longitudine WGS84 - 33N (fine stesa) [°]	282384
Quota p.c. s.l.m. [m]	245
Anno di misura	2015



Modelled rayleigh wave phase velocity



Profilo Vs



Ubicazione