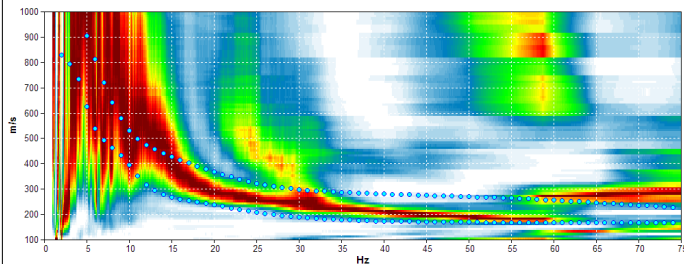
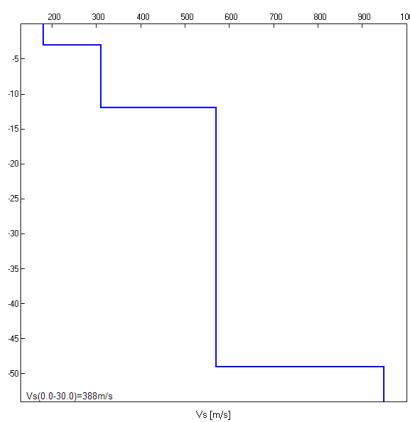


## Misura in array di tipo Re.Mi.

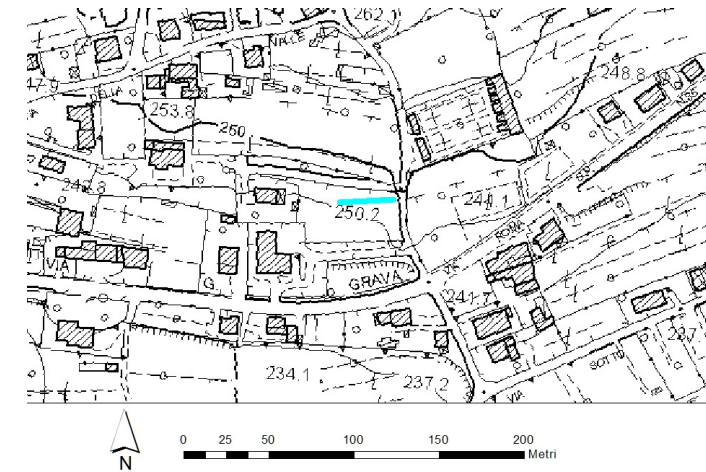
Progressivo	A31
Latitudine WGS84 - 33N (inizio stesa) [°]	5097522
Longitudine WGS84 - 33N (inizio stesa) [°]	287220
Latitudine WGS84 - 33N (fine stesa) [°]	5097521
Longitudine WGS84 - 33N (fine stesa) [°]	287188
Quota p.c. s.l.m. [m]	250
Anno di misura	2015



Modelled rayleigh wave phase velocity



Profilo Vs



Ubicazione