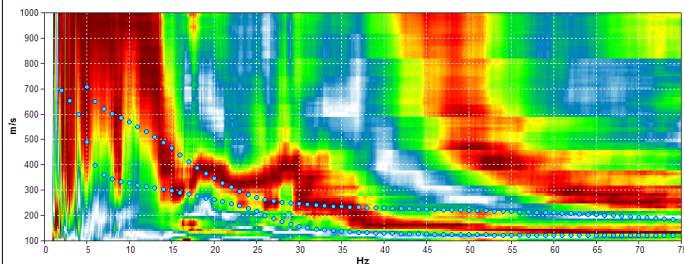
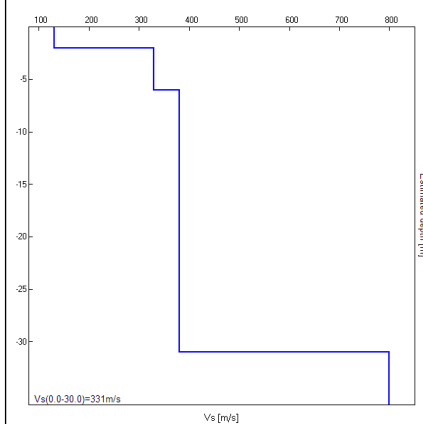


## Misura in array di tipo Re.Mi.

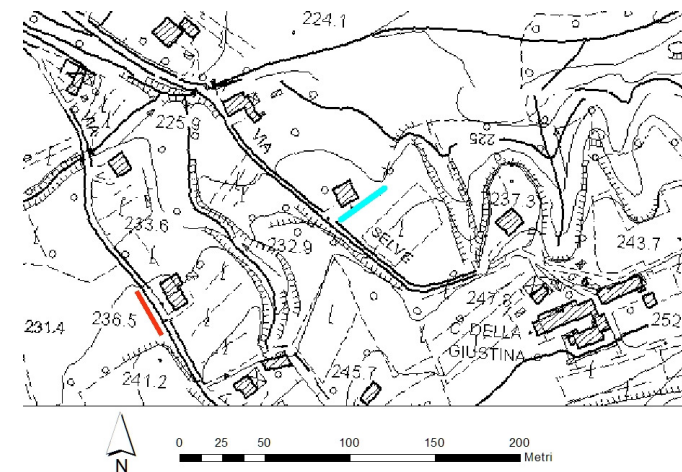
Progressivo	A30
Latitudine WGS84 - 33N (inizio stesa) [°]	5097518
Longitudine WGS84 - 33N (inizio stesa) [°]	287968
Latitudine WGS84 - 33N (fine stesa) [°]	5097536
Longitudine WGS84 - 33N (fine stesa) [°]	287994
Quota p.c. s.l.m. [m]	235
Anno di misura	2015



Modelled rayleigh wave phase velocity



Profilo Vs



Ubicazione