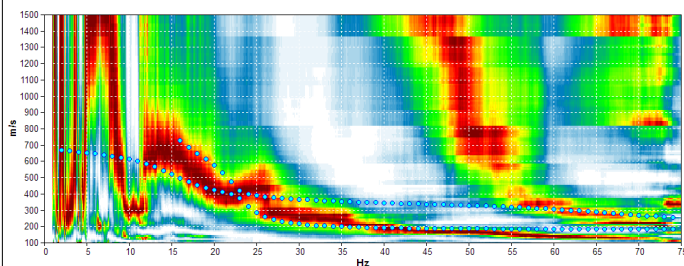
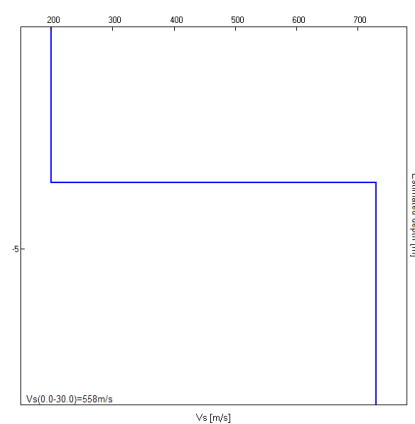


## Misura in array di tipo Re.Mi.

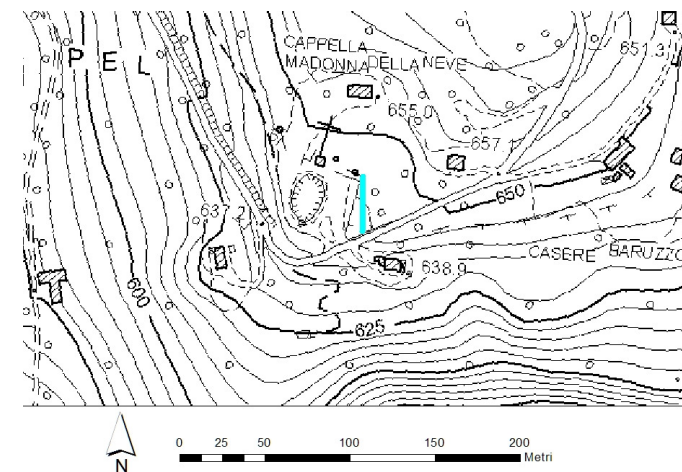
Progressivo	A32
Latitudine WGS84 - 33N (inizio stesa) [°]	5098709
Longitudine WGS84 - 33N (inizio stesa) [°]	287598
Latitudine WGS84 - 33N (fine stesa) [°]	5098741
Longitudine WGS84 - 33N (fine stesa) [°]	287599
Quota p.c. s.l.m. [m]	255
Anno di misura	2015



Modelled rayleigh wave phase velocity



Profilo Vs



Ubicazione