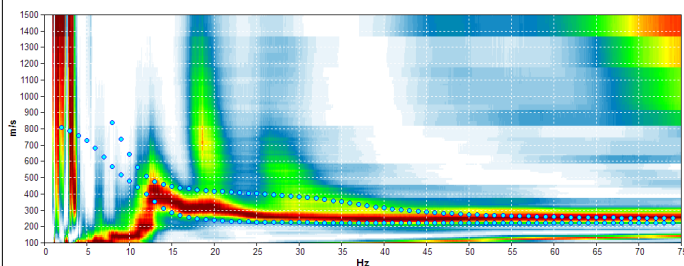
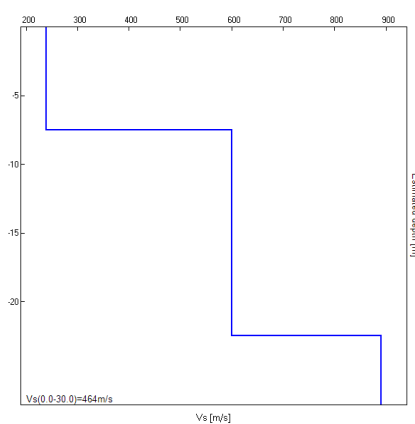


## Misura in array di tipo Re.Mi.

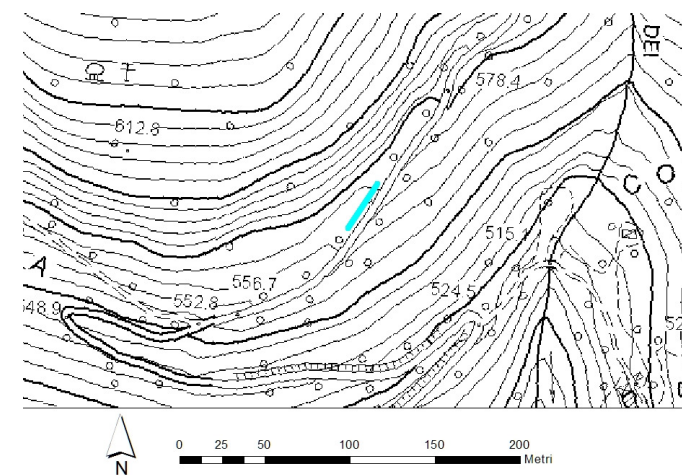
Progressivo	A25
Latitudine WGS84 - 33N (inizio stesa) [°]	5098764
Longitudine WGS84 - 33N (inizio stesa) [°]	287102
Latitudine WGS84 - 33N (fine stesa) [°]	5098791
Longitudine WGS84 - 33N (fine stesa) [°]	287119
Quota p.c. s.l.m. [m]	565
Anno di misura	2015



Modelled rayleigh wave phase velocity



Profilo Vs



Ubicazione