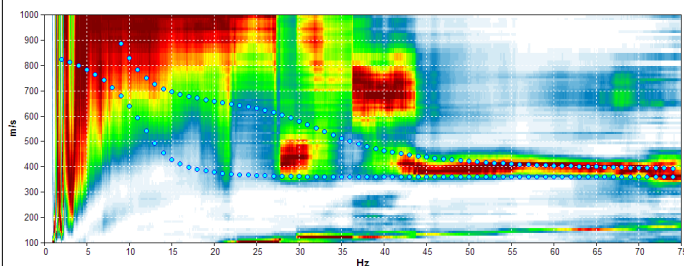
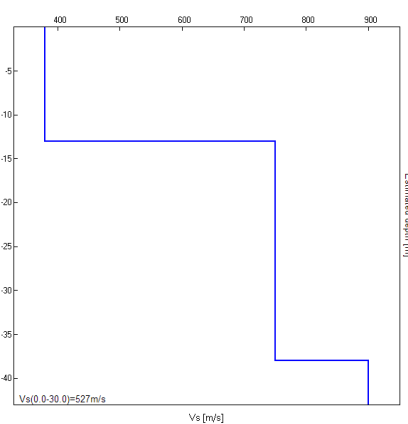


## Misura in array di tipo Re.Mi.

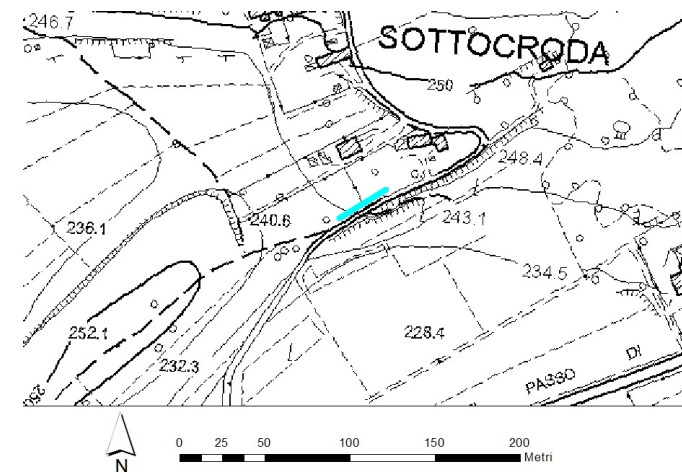
Progressivo	A12
Latitudine WGS84 - 33N (inizio stesa) [°]	5095921
Longitudine WGS84 - 33N (inizio stesa) [°]	283249
Latitudine WGS84 - 33N (fine stesa) [°]	5095938
Longitudine WGS84 - 33N (fine stesa) [°]	283276
Quota p.c. s.l.m. [m]	242
Anno di misura	2015



Modelled rayleigh wave phase velocity



Profilo Vs



Ubicazione