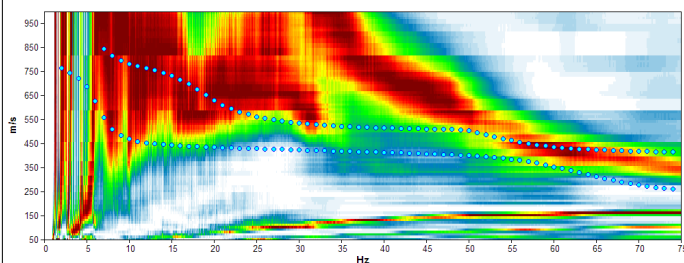
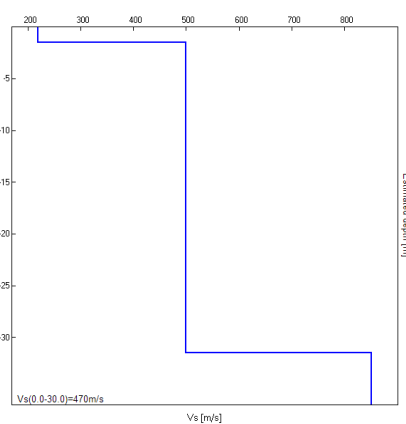


## Misura in array di tipo Re.Mi.

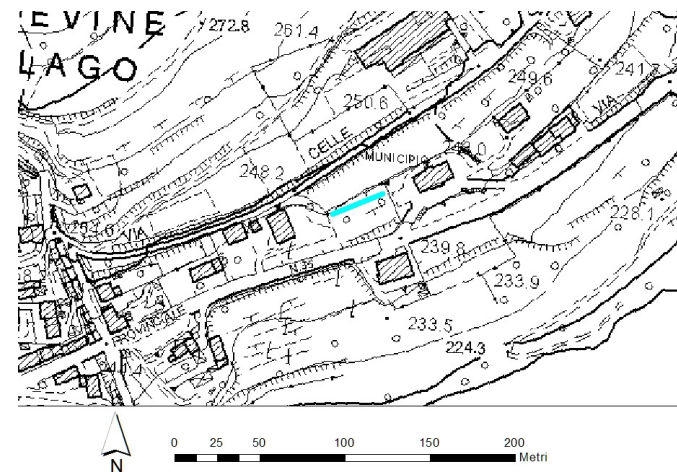
Progressivo	A10
Latitudine WGS84 - 33N (inizio stesa) [°]	5096935
Longitudine WGS84 - 33N (inizio stesa) [°]	285847
Latitudine WGS84 - 33N (fine stesa) [°]	5096947
Longitudine WGS84 - 33N (fine stesa) [°]	285877
Quota p.c. s.l.m. [m]	240
Anno di misura	2015



Modelled rayleigh wave phase velocity



Profilo Vs



Ubicazione