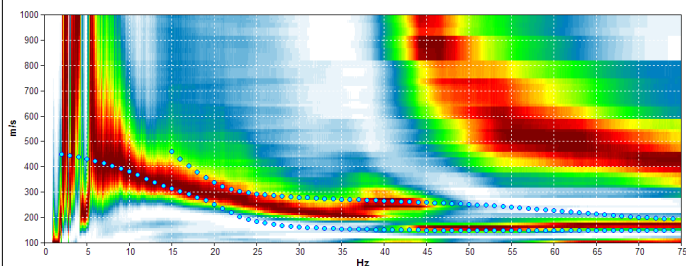
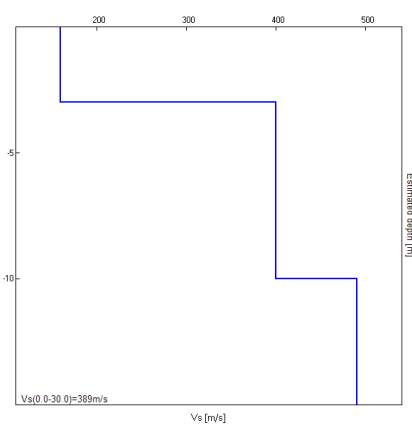


Misura in array di tipo Re.Mi.

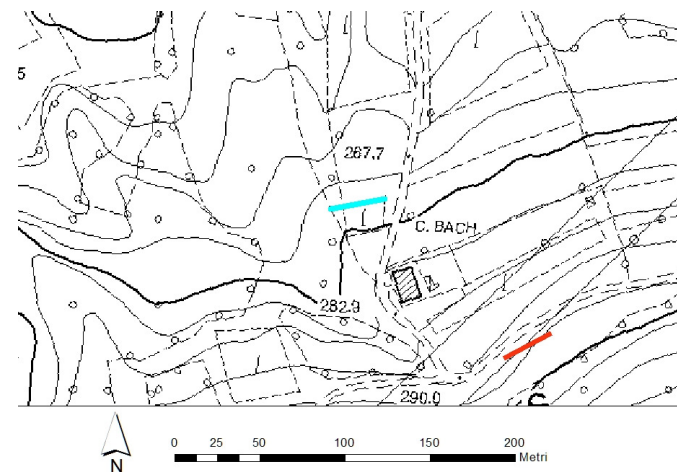
Progressivo	A36
Latitudine WGS84 - 33N (inizio stesa) [°]	5096997
Longitudine WGS84 - 33N (inizio stesa) [°]	287569
Latitudine WGS84 - 33N (fine stesa) [°]	5097003
Longitudine WGS84 - 33N (fine stesa) [°]	287601
Quota p.c. s.l.m. [m]	275
Anno di misura	2015



Modelled rayleigh wave phase velocity



Profilo Vs



Ubicazione